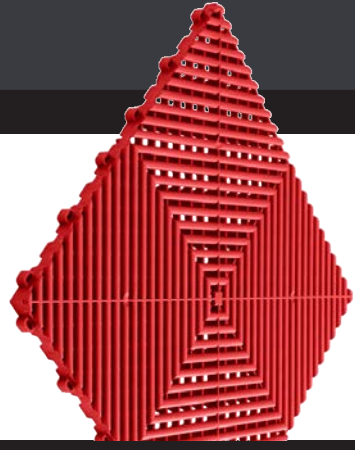


## Ribtrax PRO Modular Flooring Tile



|  |                      |   |
|--|----------------------|---|
|  | Dimensions           | 12" x 12" x .5" (1.3lbs)<br>1 sq. ft.   |
|  | Superior Strength    | 1/2" height profile features a compressive strength of >2500psi.  |
|  | Slip Resistant       | A safe solution to moisture.  |
|  | Rain or Shine        | UV Stabilizer mixed into the material as well as the color pigments, making them highly fade resistant. |
|  | Do It Yourself       | Quick install in hours not days provides a low maintenance, hassle free cleaning.                       |
|  | Silent Step          | No click-clack or excessive noise.  |
|  | Chemical Resistant   | Resistant to oil, gas, acid or solvents including Skydrol and Alkalies.                                 |
|  | Cold/ Heat Resistant | Temperature Tolerances:<br>-22 °F to + 248 °F.  |
|  | Construction         | Open profile, ribbed design with 1/4" built in, self-draining channeling system                         |



**Perfect for outdoor events!**  
Safe! Slip-resistant when wet.  
Keep your booth area and feet dry when it rains.



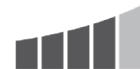
**Comfortable to walk on!**  
Gentle vertical flex provides forgiveness on lower backs, knees, and joints.



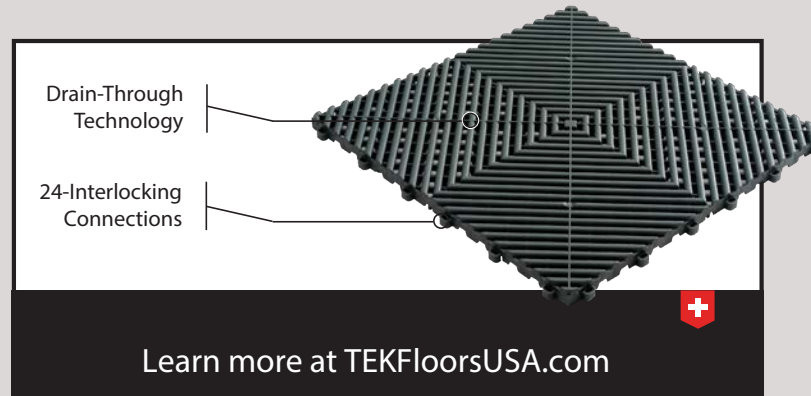
**Customizable options!**  
Customize the floor with your logos.



Durability



Comfort



### Recommended Uses:



Trade Shows



Conventions



Automotive

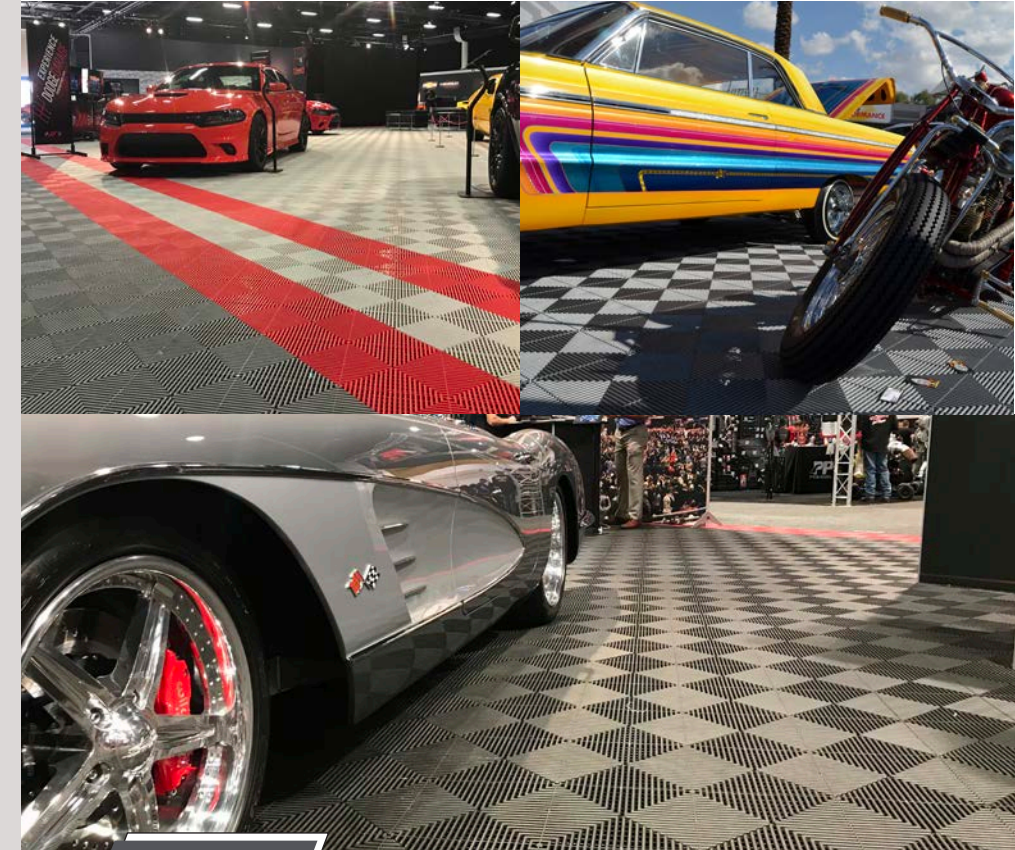


Commercial



Other

Ribtrax® Pro is a revolutionary tile that combines a striking, eye-catching design with unmatched functionality. It is the most versatile and durable tile style in our collection. It's never been easier to transform your showroom, garage, trade show booth or event floor with a premium, commercial grade modular flooring solution.



### Available Colors:

R | Rental S | Specialty Colors



Racing Red, Jet Black, Slate Gray, Pearl Gray, Royal Blue, Turf Green, Mocha Java, Island Blue, Teal, Arctic White, Pearl Silver, Tropical Orange, Citrus Yellow, Chocolate Brown, Techno Green, Terra Cotta, Carnival Pink, Cosmic Purple

## Boost Modular Skate Tile

Boost tiles are designed to provide a durable, safe and functional game court for backyard and driveway court and skate applications. They are made from a specially blended, high-impact, copolymer polypropylene that lasts for years.



Available Colors:  Rental

Black, Graphite, Titanium, Emerald Green, Olive Green, Royal Blue, Navy Blue, Ice Blue, Bright Red, Orange, Yellow



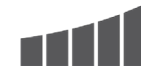
**Perfect for outdoor events!**  
Safe! Slip-resistant when wet.  
Keep your booth area and feet dry when it rains.



**Comfortable to walk on!**  
Gentle vertical flex provides forgiveness on lower backs, knees, and joints.



**Customizable options!**  
Customize the floor with your logos.



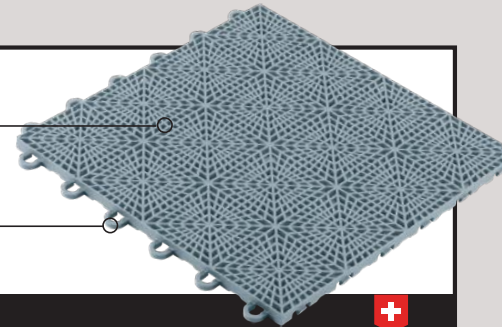
Durability



Comfort

Drain-Through  
Technology

12-Interlocking  
Connections



Learn more at [TEKFloorsUSA.com](https://www.tekfloorsusa.com)

Recommended Uses:



Basketball



Hockey



Shuffleboard



Multi-Sport



In-line Hockey



Dimensions

12" x 12" x .5" (1.3lbs)  
1 sq. ft.



Superior Strength

1/2" height profile features a  
compressive strength of >2500psi.



Rain or Shine

UV Stabilizer mixed into the material  
as well as the color pigments, making  
them highly fade resistant.



Do It Yourself

Quick install in hours not days pro-  
vides a low maintenance, hassle free  
cleaning.



Silent Step

No click-clack or excessive noise.



Chemical Resistant

Resistant to oil, gas, acid or solvents  
including Skydrol and Alkalies.



Cold/ Heat Resistant

Temperature Tolerances:  
-22 °F to + 248 °F.



Construction

Open profile, ribbed design with 1/4"  
built in, self-draining channeling  
system



100% Recyclable

100% sustainable.

## Vinyltrax PRO Modular Flooring Tile

Vinyltrax® Pro offers realistic hardwood grains and patterns with legendary Swisstrax performance. It's never been easier to transform your showroom, trade show booth or event floor with a premium, commercial grade vinyl flooring solution.



Available Colors:  Rental

Ash Pine, Reclaimed Pine, Black Oak, Carbon Fiber, Light Maple



**Comfortable to walk on!**  
Gentle vertical flex provides forgiveness on lower backs, knees, and joints.



Durability



**Customizable options!**  
Customize the floor with your company's brand colors and logos.



Comfort

0.5MM  
Wear Layer

3MM  
Vinyl Inlay

0.75" Polypropylene  
Base



Learn more at [TEKFloorsUSA.com](https://www.tekfloorsusa.com)

Recommended Uses:



Trade Shows



Conventions



Automotive



Commercial



Other



Dimensions

15.75" x 15.75" x .75" (2.7lbs).  
1.72 sq. ft.



Superior Strength

3/4" height profile features a compressive strength of >250psi.



Replaceable

Ability to easily replace any vinyl inlay regardless of location.



Do It Yourself

Average installation is 500 sq.ft. per person per hour.



Construction

Solid profile, 3mm custom vinyl design inlaid to a 3/4" polypropylene tray. 1/4" built in, self-draining channeling system.



Recyclable

Sustainable.



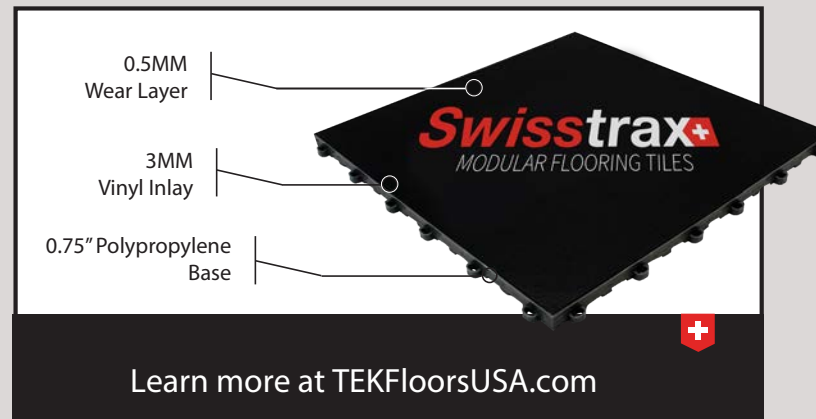
|  |                   |  |
|--|-------------------|--|
|  | Dimensions        | 15.75" x 15.75" x .75" (2.7lbs).<br>1.72 sq. ft.   |
|  | Superior Strength | 3/4" height profile features a<br>compressive strength of >250psi.   |
|  | Replaceable       | Ability to easily replace any vinyl in-<br>lay regardless of location.   |
|  | Construction      | Solid profile, 3mm custom vinyl de-<br>sign inlaid to a 3/4" polypropylene<br>tray. 1/4" built in, self-draining chan-<br>neling system. |
|  | Recyclable        | Sustainable.   |

**Comfortable to walk on!**  
Gentle vertical flex provides  
forgiveness on lower backs,  
knees, and joints.

**Customizable options!**  
Customize the floor with your  
company's brand colors and  
logos.

**Durability**

**Comfort**

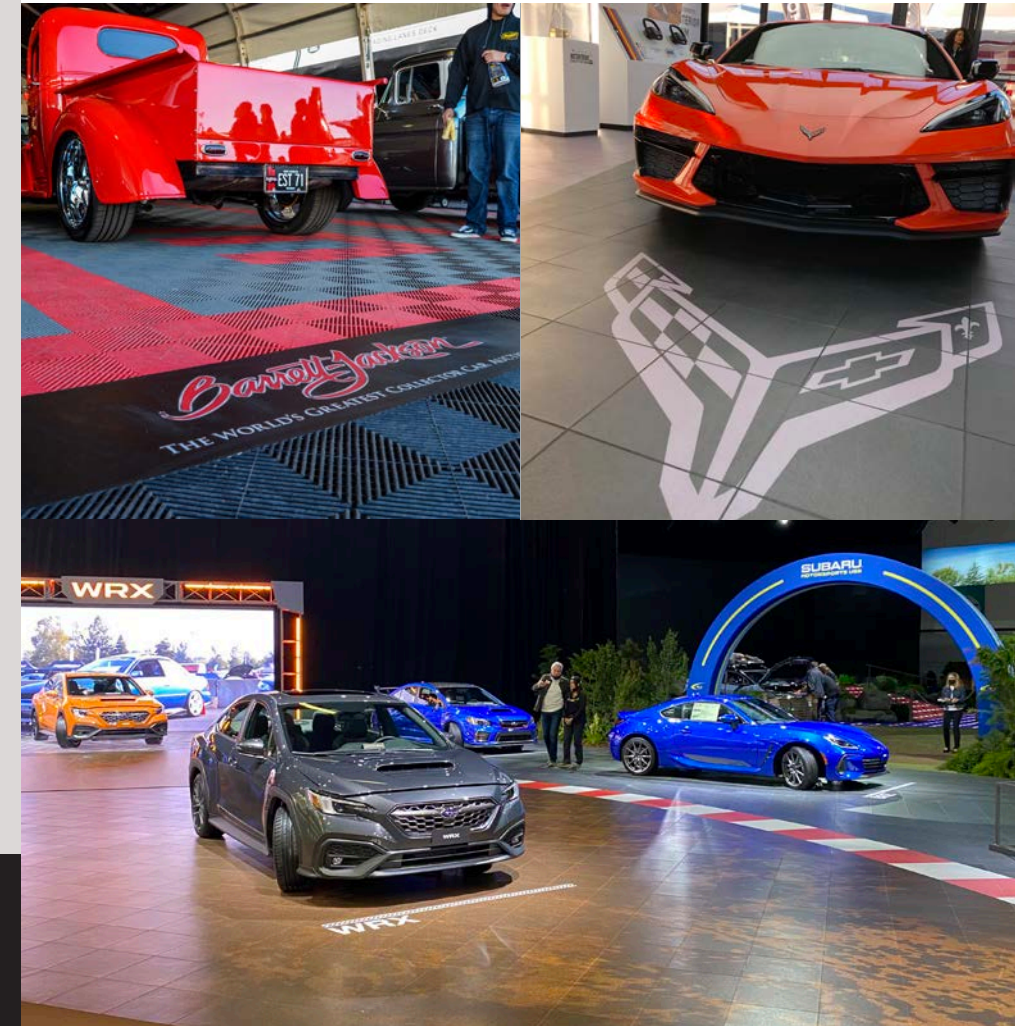


**Recommended Uses:**

Trade Shows
 Conventions
 Events
 Commercial
 Other







## Graphictrax PRO Modular Flooring Tile

Graphictrax® Pro allows you to choose from thousands of images, patterns, colors, or provide your own for a custom tile made to withstand the demands of both residential and commercial environments. It's never been easier to personalize your style, or promote your brand.



## Cabletrax PRO Modular Flooring Tile



|   |                   |   |
|---|-------------------|---|
|    | Dimensions        | 15.75" x 15.75" x .75" (1.3lbs)<br>1.72 sq. ft.   |
|    | Superior Strength | 3/4" height profile features a compressive strength of >2500psi.  |
|    | Safety            | Eliminate tripping hazards by placing cords underneath flooring system.                                 |
|  | Aesthetics        | Have a presentable space with cords out of sight and out of mind.                                       |
|  | Do It Yourself    | No tools required for ease of install and dismantle.  |
|  | Rain or Shine     | UV Stabilizer mixed into the material as well as the color pigments, making them highly fade resistant. |



**Perfect for outdoor events!**  
Safe! Slip-resistant when wet.  
Keep your booth area and feet dry when it rains.



**Comfortable to walk on!**  
Gentle vertical flex provides forgiveness on lower backs, knees, and joints.



**Customizable options!**  
Customize the floor with your company's brand colors and logos.



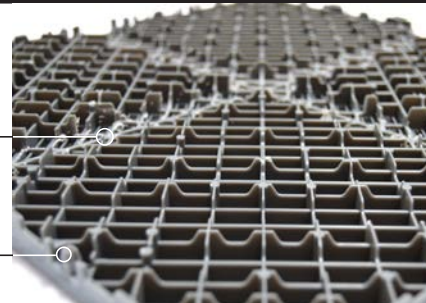
Durability



Comfort

Cable-Channel  
Technology

24-Interlocking  
Connections



Learn more at [TEKFloorsUSA.com](https://www.tekfloorsusa.com)

### Recommended Uses:



Trade Shows



Conventions



Automotive

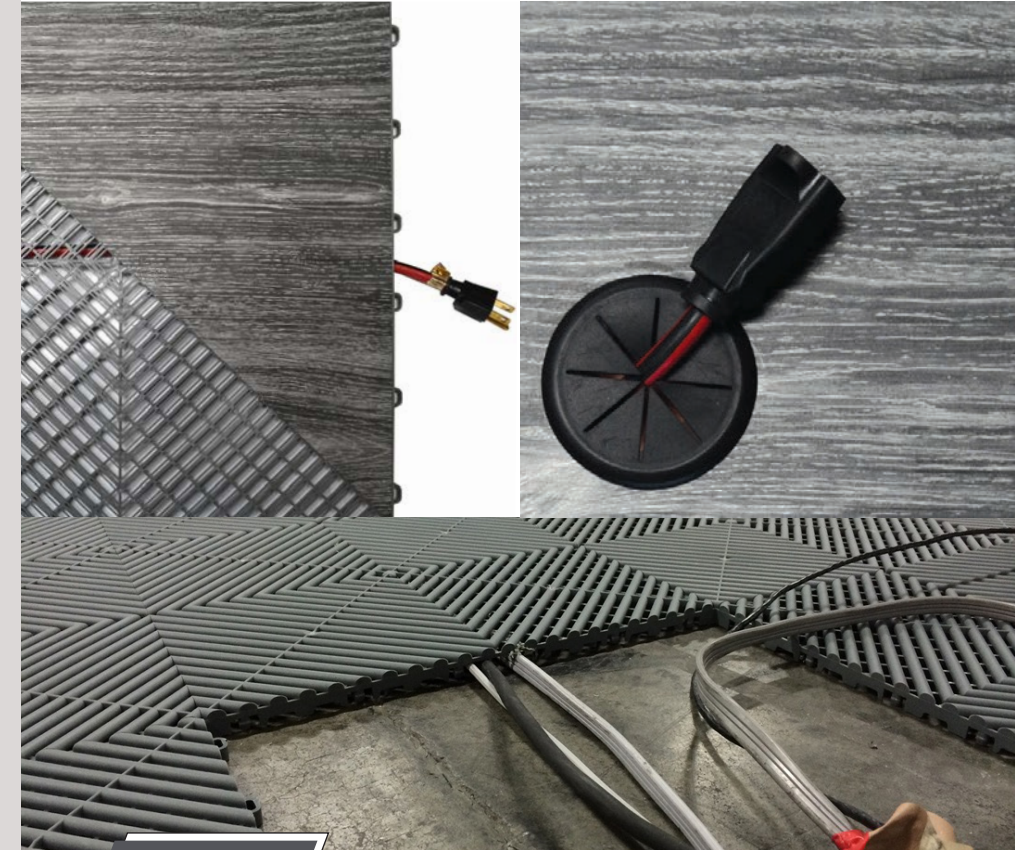


Commercial



Events

Cabletrax® Pro is a revolutionary tile that combines a striking, eye-catching design with unmatched functionality. It is designed for cable management allowing for easy routing of electrical and data cables. Cabletrax® Pro tiles eliminate tripping hazards by discreetly hiding your cables in the 1.5" x .25" cable management channels under the tile.



### Available Colors:

R | Rental S | Specialty Colors



Racing Red, Jet Black, Slate Gray, Pearl Gray, Royal Blue, Turf Green, Mocha Java, Island Blue, Teal, Arctic White, Pearl Silver, Tropical Orange, Citrus Yellow, Chocolate Brown, Techno Green, Terra Cotta, Carnival Pink, Cosmic Purple

## Court Base Panel

A stable foundation combined with a high-performance play surface, combine to create an all-in-one, easy-to-install court solution. An excellent choice for grass and soil applications.



### Dimensions

28" x 28" x 1.25" (10.3lbs)  
5.44 sq. ft.



### Superior Strength

1.25" height profile features a compressive strength of >500 lbs. per sq. in.



### Slip Resistant

A safe solution to moisture.



### Rain or Shine

UV Stabilizer mixed into the material as well as the color pigments, making them highly fade resistant.



### Do It Yourself

Quick install in hours not days provides a low maintenance, hassle free cleaning.



### Silent Step

No click-clack or excessive noise.



### Cold/ Heat Resistant

Temperature Tolerances:  
-22 °F to + 248 °F.



### Construction

Textured surface. Built-in Vertical and Horizontal Drainage. Support ribs creating a stable foundation.



### 100% Recyclable

100% sustainable.



### Perfect for outdoor events!

Safe! Slip-resistant when wet. Keep your booth area and feet dry when it rains.



### Comfortable to walk on!

Gentle vertical flex provides forgiveness on lower backs, knees, and joints.



### Customizable options!

Customize the floor with your company's brand colors and logos.



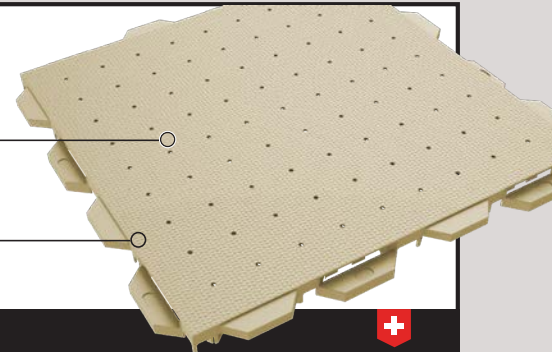
### Durability



### Comfort

Drain-Through Technology

16-Interlocking Connections



Learn more at [TEKFloorsUSA.com](https://www.tekfloorsusa.com)

### Recommended Uses:



Trade Shows



Futsal



Automotive



Events



Basketball

### Available Colors:

® | Rental



Putty, Willow Green, Charcoal Gray



## ATHLETIC FLOORING

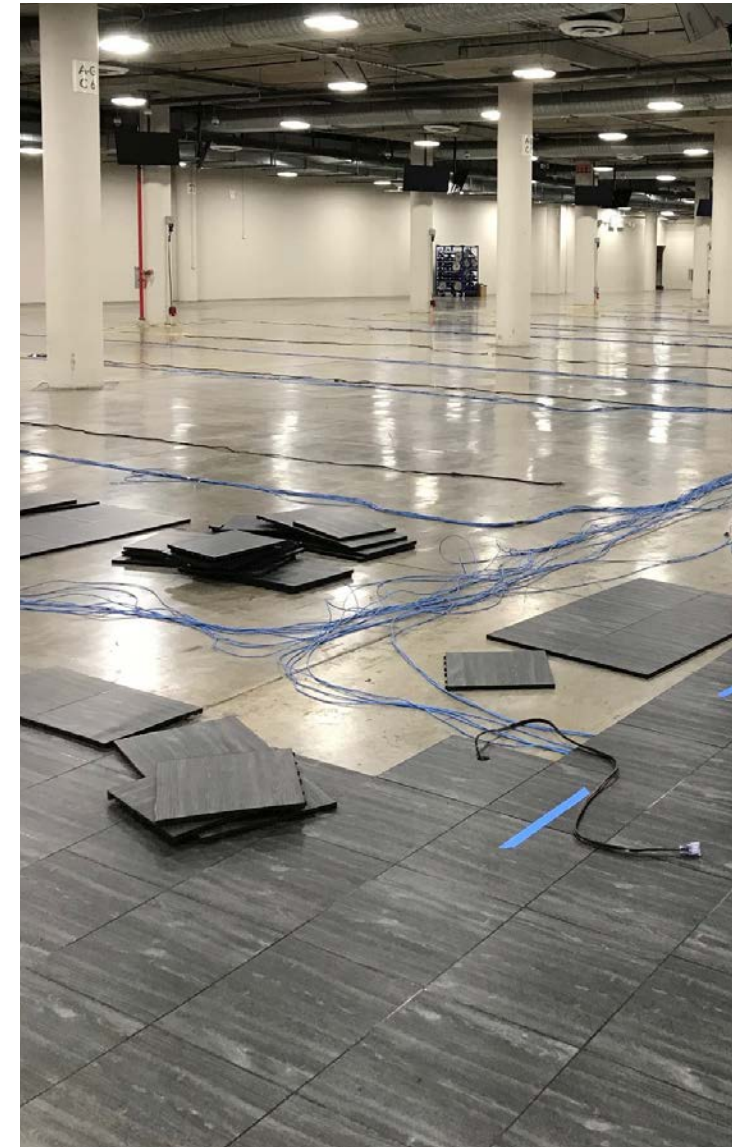
Our TEK Floors USA Event Surface Tiles are strong, durable tiles able to withstand heavy loads and high demand from any event activity. Our popular Versacourt tiles are perfectly suited for sporting events in venues that do not have ready-built facilities. The interlocking feature provides athletes with a flat, safe, and comfortable playing surface that is suitable for roller hockey, basketball, and many other sports. They have even found favor with users who need a playing surface for their tetherball and cornhole events.



## TRADE SHOWS

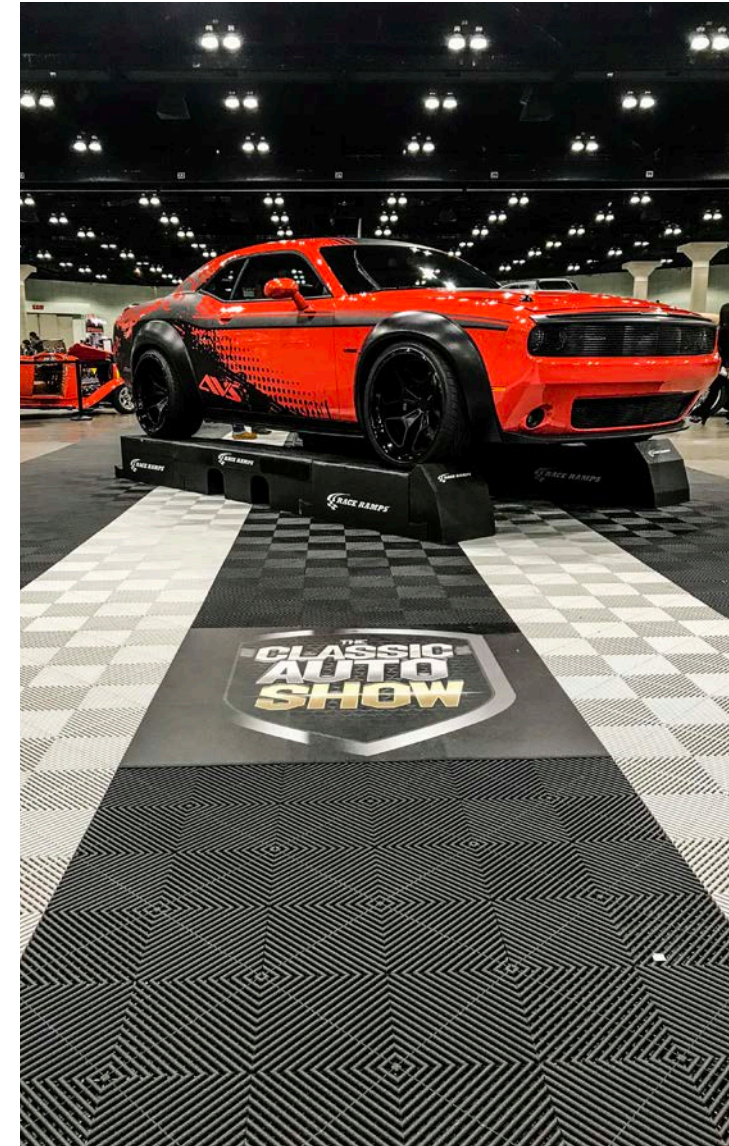
From a booth size of a few square feet to one that is thousands of square feet, RG Event Surfaces has a logical choice for trade show and expo flooring. Our surfaces are portable, comfortable, customizable, and easy to install. RG Event Surfaces has a sustainable solution compared to traditional roll-out carpets that may not be reusable.

The brilliant and assorted styles and color choices available allow you to choose a floor scheme that complement's your booth's theme. Greet visitors to your booth with custom Graphictrax logo tiles - printed with your company's logo or brand images in either a single tile or multi-tile format.



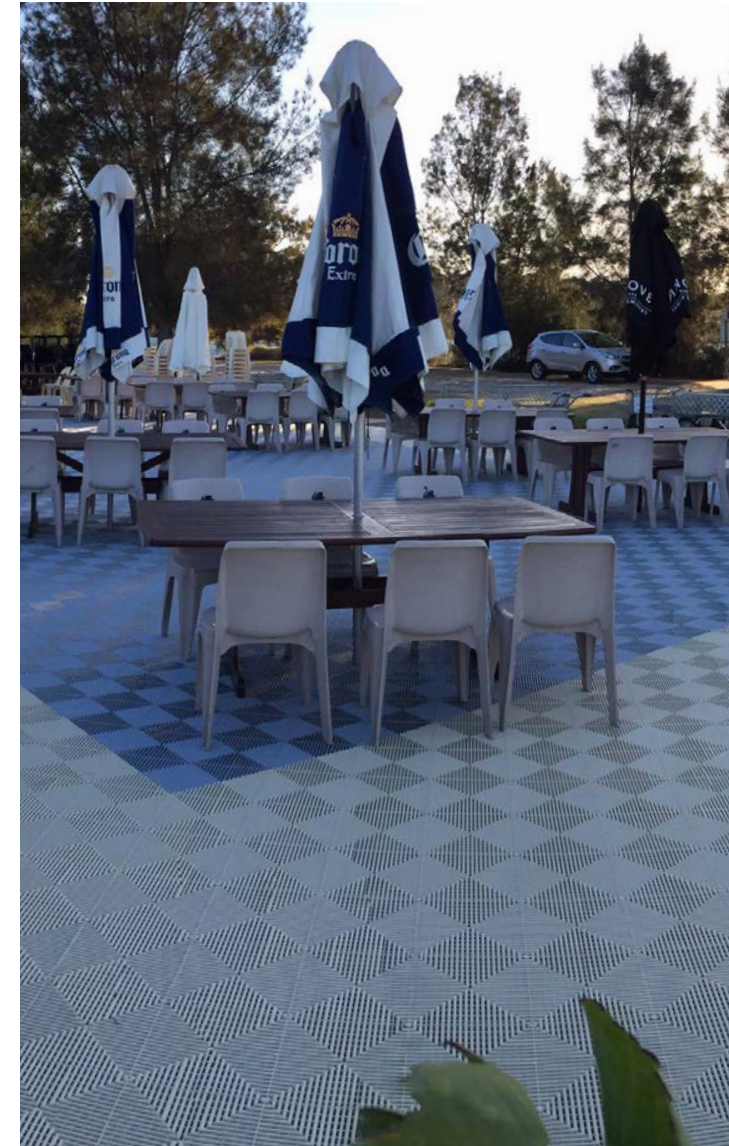
## CUSTOMIZED FLOORING

Create a branded design for your next event with TEK Floors USA. Whether you're exhibiting at a conference or creating a unique showcase area to highlight products, TEK Floors USA offers a variety of custom flooring options that can integrate company logos or special artwork into the temporary flooring option you choose. Discover what you can create with RG today.



### SPECIAL EVENTS & DANCE FLOORS

Whether your event will be taking place in a temporary structure, or you are in a grand ballroom TEK Floors USA has a flooring system tailored for your need. Our modular interlocking tiles provide an easy install and dismantle allowing extra time for the rest of your event to-do's. With a range of tile style and color options you are able to create designated areas, customized graphics, and incorporate company branding.



## OUTDOOR EVENTS

No matter the type of outdoor event, TEK Floors USA has a solution to withstand the elements. Our weather-proof and slip-resistant surfaces allow access for moisture and debris to flow through and channel beneath the surface. Whether it's an automotive event, agricultural machinery trade show or anything in between, TEK Floors USA is the perfect solution for your outdoor flooring event needs.

